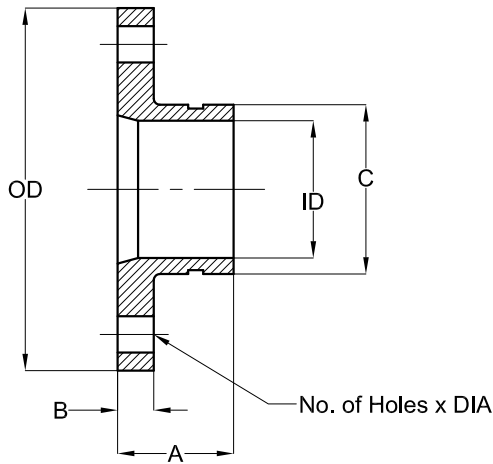


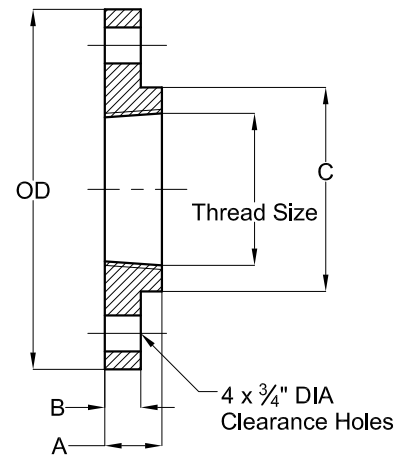


Adapters - Grooved & Threaded Models FGA, FGR & FTA

Grooved Adapters Models FGA & FGR



Threaded Adapters Models FTA



DIMENSIONS [inches]

Nexus Part No.	SIZE	ID	OD	A	B	C	Bolt Holes	Wgt. [Lbs]
							No. of Holes x DIA	
FGA-250	2½"	2.21	7.00	2.33	1¼"	2⅞"	4 x ¾"	7.00
FGA-300	3"	2.83	7.50	2.39	¾"	3½"	4 x ¾"	8.24
FGA-400	4"	3.78	9.00	2.64	15/16"	4½"	8 x ¾"	13.00
FGA-500	5"	4.75	10.00	2.69	15/16"	5¼"	8 x ⅞"	16.14
FGA-600	6"	5.75	11.00	2.80	1"	65/8"	8 x ⅞"	20.00
FGA-800	8"	7.65	13.50	3.12	1⅝"	85/8"	8 x ⅞"	32.00
FGA-1000	10"	9.57	16.00	3.34	1¾"	10¾"	12 x 1"	46.00
FGA-1200	12"	11.42	19.00	3.40	1¾"	12¾"	12 x 1"	67.00
FGR-300-250	3" x 2½"	2.21	7.50	2.40	¾"	2⅞"	4 x ¾"	8.27

DIMENSIONS [inches]

Nexus Part No.	SIZE	Thread SIZE	OD	A	B	C	Wgt. [Lbs]
FTA-250	2½" x 2½"	2½" NPT	7.0	1⅝"	1¼"	3¼"	5.85
FTA-250-200	2½" x 2"	2" NPT	7.0	1	1¼"	3¼"	5.80
FTA-300-200	3" x 2"	2" NPT	7.5	1	¾"	3¼"	7.40
FTA-300-250	3" x 2½"	2½" NPT	7.5	1⅝"	¾"	3¼"	8.00

MATERIAL & DESIGN DATA

BODYDUCTILE IRON, ASTM A395
PSIG / TEMP. RATING175 PSIG / 250°F

ORDER DATA

QTY	Part#	QTY	Part#
_____	FGA-250	_____	FGR-300-250
_____	FGA-300	_____	FTA-250
_____	FGA-400	_____	FTA-250-200
_____	FGA-500	_____	FTA-300-200
_____	FGA-600	_____	FTA-300-250
_____	FGA-800	_____	
_____	FGA-1000	_____	
_____	FGA-1200	_____	

PROJECT _____
CONTRACTOR _____
PO/JOB NO. _____
ENGINEER _____
REPRESENTATIVE _____
DATE _____