



nexus

Balancing & Control Product Portfolio

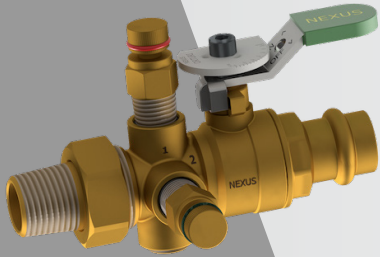
**Hydronic Solutions
One connection at a time...**



proven design

Nexus Balancing & Control Solutions

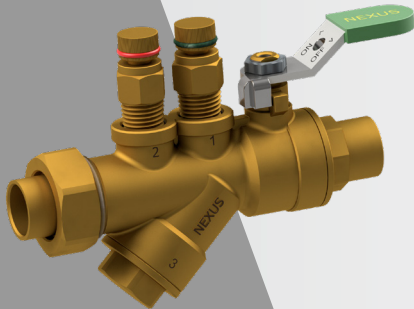
We take great pride in engineering excellence and we provide the commercial HVAC industry with products of the highest quality. At the core of our Hose Paks and Coil Paks is one of our exceptional flow control valves. Whether it is an automatic flow control valve, manually adjustable valve, or PICV, Nexus has the right product for you.



Manual Balancing Valves

The Nexus Valve range of manual balancing valves supports a variety of sizes as well as flow control and flow measurement strategies. Our DZR Brass range (1/2" through 2 1/2") offers either venturi style balancing or globe style balancing while our Large Dimension range (2 1/2" through 12") is offered in both venturi and globe as well as pitot tube. Regardless of the strategy you employ, or the size of the valve needed, we've got a solution

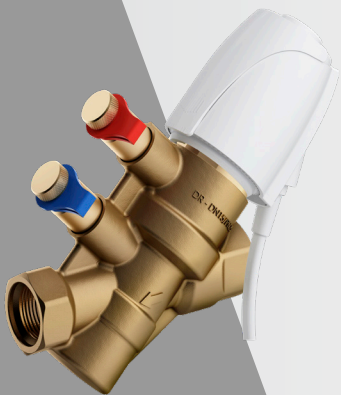
- 1/2" through 12"
- Venturi, Multi-Turn, and Pitot Tube options available
- DZR Brass valve bodies up to 2 1/2"



Automatic Flow Control Valves

The UltraMatic™, our automatic flow control valve, provides constant flow in varying flow conditions. The UltraMatic™ uses a non-clog design, stainless steel cartridge with no metal-to-metal contact. The pressure independent UltraMatic™ will provide rates from 0.33 GPM to over 51,800 GPM at ± 5% accuracy over a wide operating range of 2-45 PSID.

- 1/2" through 48"
- Non-Clogging cartridge design
- 0.33 GPM to 51,840 GPM
- DZR Brass valve bodies up to 2 1/2"

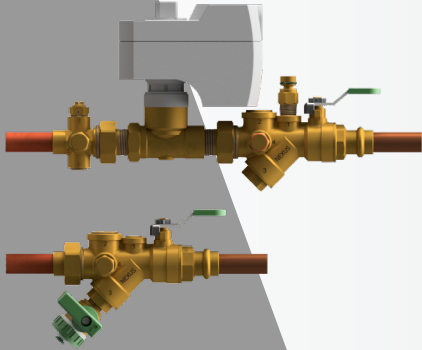


Pressure Independent Control Valves

Pressure Independent Control Valves combine the functionality of the ATC and an automatic balancing valve all into one nice package. PICV's can adjust to changes in pressure while maintaining the correct flow for the designed system at multiple load requirements. Since PICV's combine multiple functions into one valve, the time involved in installation is also substantially reduced.

- 1/2" through 10"
- Built in Venturi in sizes up to 2"
- DZR Brass valves bodies up to 2"
- Smart-IS Actuator on 2 1/2" and above

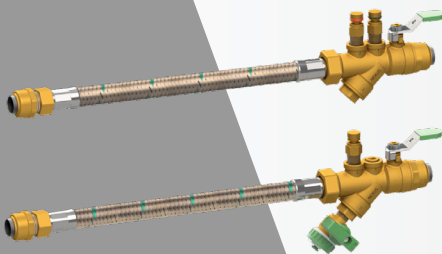
optimal performance



Coil Paks

For years, contractors and manufacturers have used individual components to make piping packages. With Nexus Valve Coil Paks, pre-configured assemblies are available to reduce expensive field labor as well as potential leak points

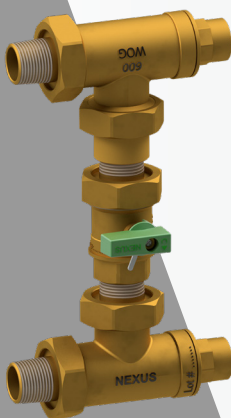
- ½" through 12"
- Automatic, Manual, or Pressure Independent Control Valves
- DZR Brass valve bodies up to 2½"



Hose Paks

Manual or automatic? That should be your toughest decision when choosing a Hose Pak from Nexus Valve. Hose Paks provide the benefits of a Coil Pak with the flexibility of our stainless steel hose. Connecting them is a snap with our double swivel hoses.

- ½" through 2½"
- Automatic, Manual, or Isolation kits
- Multiple hose length options
- DZR Brass valve bodies

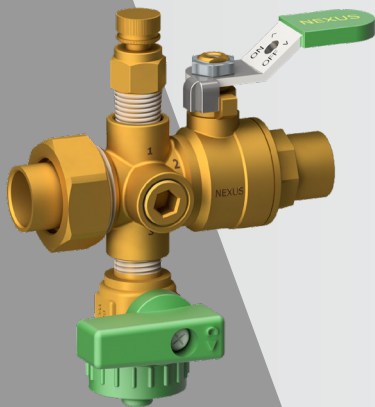


Bypass & Flushing Kits

When flushing the hydronic system prior to testing, balancing, and system operation it is important to remove dirt and debris that can occur in the course of the installation process. During the flushing and cleaning process debris can cause blockages at terminal units and potentially damage sensitive components. That is why Nexus Valve introduced the UltraBK™ Series Bypass & Flushing Valve Kits.

- ½" through 2"
- Available in FNPT, SWT, NexPress™, and NexLok™ connections

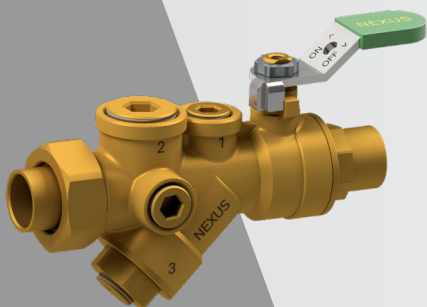
groundbreaking innovation



Instrument Stations

Install thermometers, gauges, vents, PT Plug or Blowdown drains quick and easy into one of our Instrument Stations.

- ½” through 12”
- DZR Brass valve bodies up to 2½”
- Flanged, Grooved or threaded options 2½” and above



Strainers

A combination strainer, ball valve and union end with optional accessory ports.

- ½” through 2½”
- Removable filter screen
- Blowout-proof shaft
- DZR Brass valve bodies

winning together for tomorrow