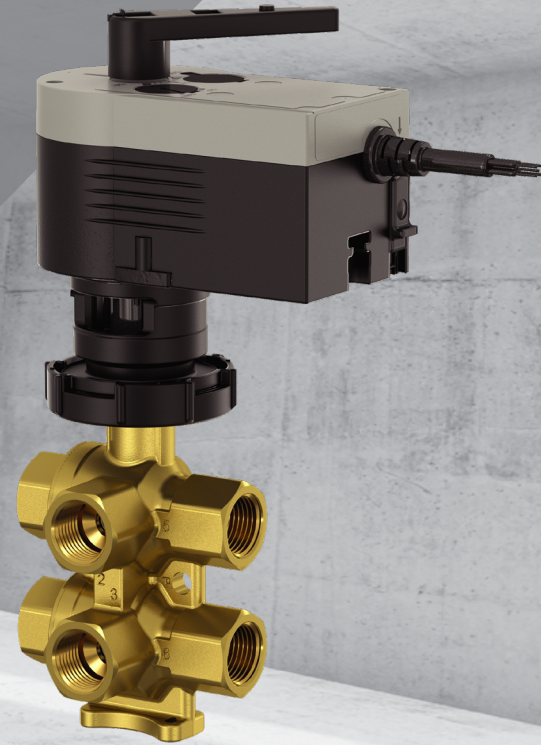




6-Way Control Valve with Actuator

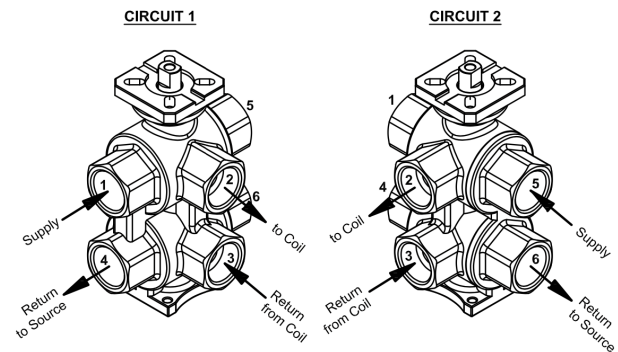
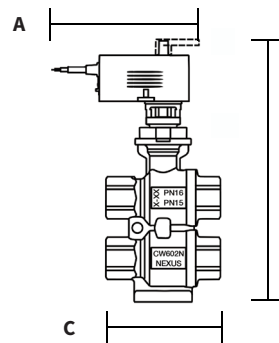
The Nexus Tribus 6-way control valve for hydronic heating and cooling systems replaces four 2-way valves and four actuators required to connect a 4-pipe system to a single coil. The unique compact feature of the Tribus 6-way valve reduces installation cost, lessens power consumption, and is ideal for chilled beams and radiant ceiling applications.

Independent Cv insert discs can be selected to individually balance flow rates for heating and cooling. The single data point 0-10Vdc modulates control with zero percent leakage, in the closed position and provides optimum climate control even with different design flows for maximum energy efficiency and occupant comfort.



Features:

- Available: 1/2" Size
- Body: Max Temperature 325° F.
- Body: Max Operating Pressure 240 PSI
- DZR Brass Body
- Chrome Plated Brass Ball
- Teflon & EPDM Seals
- Flow Characteristics: Linear
- Leakage Rate: 0%
- Close Off Pressure: 35 PSID
- 0-10 Vdc Control



Size	Dimensions (inches)	A	B	C
1/2"		5.9	9.07	3.35

Design Data

Cv for Circuit 1 & 2			WT (lbs) (Valve Body)	Actuators							
Part No.	Cv	Order Data Code		Actuator Brand	Part #	Supply Voltage	Control Voltage	Running Time	Max Ambient Temperature	Type of Protection	Max Torque
Valve only (no insert)	2.81	X	2.865	Nexus (T1)	TCVA/MN80597.0038	24 VAC	0-10 V	35/60/120 sec	-21 °F to 131 °F	IP 54	5.16 lbs
SWV1-INS-A Rev000	0.29	A									
SWV1-INS-B Rev000	0.46	B									
SWV1-INS-C Rev000	0.73	C									
SWV1-INS-D Rev000	1.16	D									
SWV1-INS-E Rev000	1.59	E									
SWV1-INS-F Rev000	1.88	F									