

The UltraMatic Stainless Steel is a precision-engineered automatic flow control valve designed for demanding environments like data centers. Available in sizes from 2" to 12", it offers versatility, durability, and consistent flow performance across a 4 - 45 PSID range.

Advantages:

- 304 or 316 stainless steel body options for corrosion resistance and durability
- Ensures constant flow rate
- Ideal vertical markets: Data Centers and other mission-critical applications

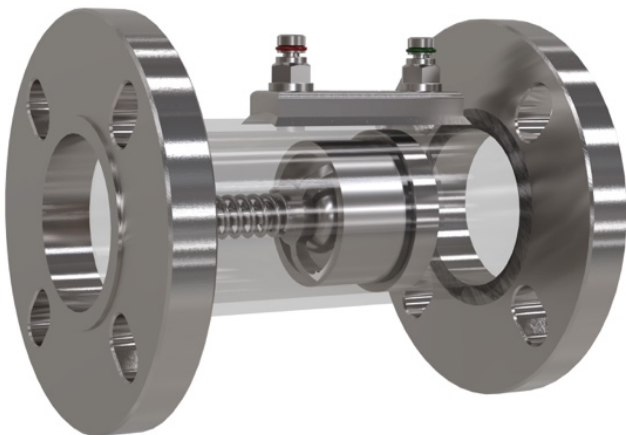
Materials & Design Data

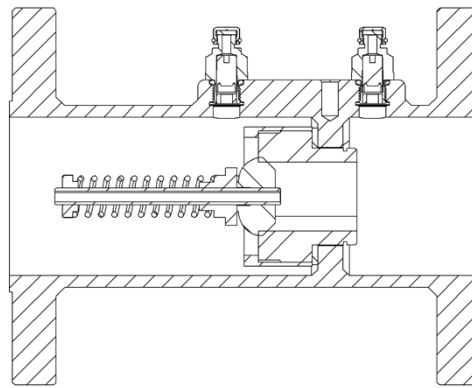
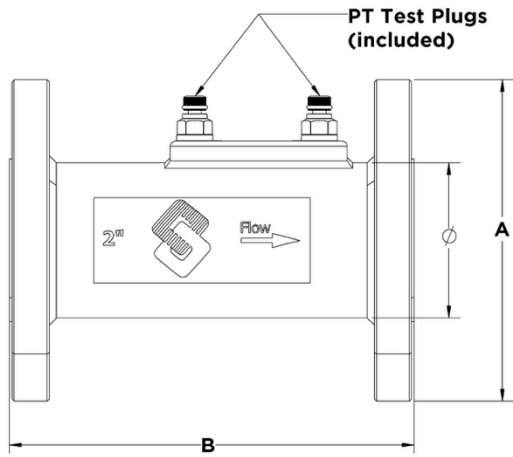
Body options	Stainless Steel - 304L or 316L (S31603)	ANSI Class 150 flange connections, 600psi CWP, 325°F
Flow Cartridge	Stainless Steel - 304L or 316L (S31603)	
Accuracy	5%	

Flow Rate Selections

Size	PSID Range	Min (gpm)	Max (gpm)
2"	4-45	25	75
3"	4-45	75	120
4"	4-45	75	240
6"	4-45	75	480
8"	4-45	125	840
10"	4-45	480	1320
12"	4-45	480	1800

Additional Imagery





Dimensions (inches)

Size	A	B	*WT [lbs.]	
			Body Only	With Cartridges
2"	7.0	8.8	19.0	20.5
3"	7.5	10.3	29.0	31.0
4"	10.0	16.6	73.0	85.0
6"	11.0	15.1	79.3	95.3
8"	13.5	16.9	116.9	144.9
10"	16.0	17.5	154.2	198.2
12"	19.0	21.8	224.0	256.0

Accessories

Description	Nexus P/N	Order Code
Hanging Tag: includes Model #, location, flow rate (maximum 7 characters)	HT	H